

QUAKE CENTRE/QUAKE CoRE OUTREACH PROGRAMME

Brandy Alger

The **Quake Centre** and **Quake CoRE** are collaborating to develop outreach programmes. These aim to improve the resilience of New Zealand through increased awareness of seismic risk and education and ways of managing those risks. By training industry and community leaders in scenario based disaster risk education, Quake Centre is helping to increase risk mitigation and disaster understanding at multiple levels.

Current programmes

Programmes underway include:

- QuakeScape
- Public seminars
- QuakeCraft
- YouTube videos

QuakeScape

QuakeScape is an interactive learning workshop that combines a puzzle based game with scenario based learning. Industry and community leaders are placed inside a puzzle room, similar to the global phenomenon Escape Rooms, and use teamwork to solve the earthquake resilience related puzzles. Each puzzle solved will win the team one lifeline. There are five lifelines in total which together allow the team to leave the room. Each lifeline (drinking water, waste water, communication, transportation and energy) will then be placed onto a choice of six resilience themes. A facilitator will ask five scenario based open-ended questions based on the team's combination of lifelines and resilience themes.

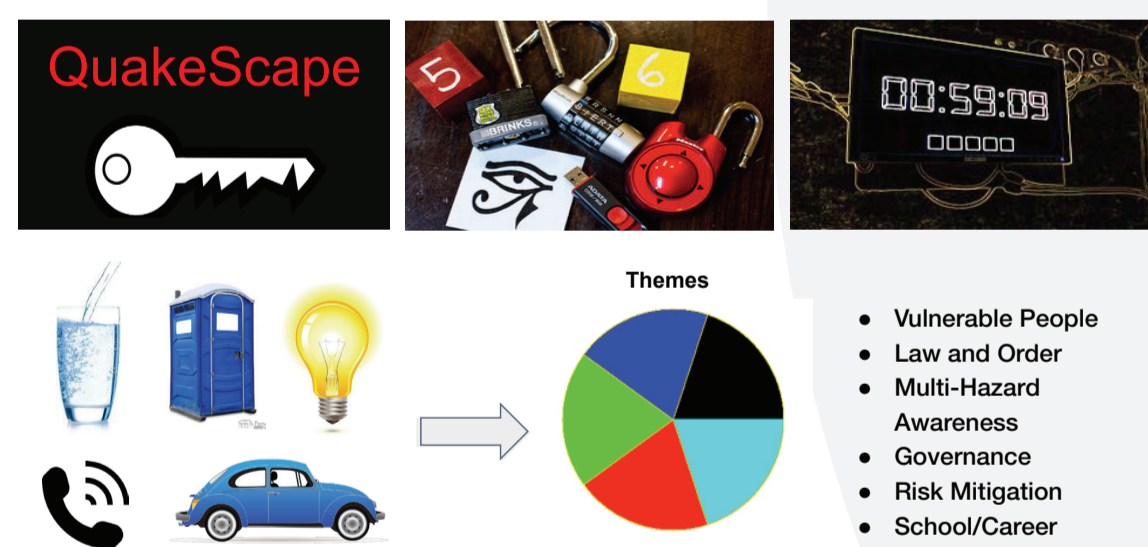
Deliverables

QuakeScape will provide a nationwide workshop where industry professionals and community leaders are trained on scenario based disaster risk reduction in a fun and engaging environment.

Timeline

A pilot programme for QuakeScape will be held by 31 December 2016 through Christchurch CDEM and it will be carried out on a national level throughout 2017.

Training industry and community leaders



Public seminars

Public Seminars run through Quake Centre are Pecha Kucha style talks open to the community, specifically targeted at young professionals. The seminars have six to eight speakers including community project leaders, engineers and researchers, who talk about earthquake resilience. The broad range of speakers enhances the connection of many industry backgrounds with earthquake resilience and encourages attendees to continue bridging the gap between research and industry experience.

Deliverables

Public seminars provide awareness and education to various audiences, particularly young professionals, while connecting the holistic environment of earthquake resilience.

Timeline

Public seminars are ongoing and will be carried out on a national level throughout 2017. A pilot was held in Christchurch on 22 August 2016 through IPENZ Engenerate Christchurch chapter.



Other activities

Other outreach programmes delivered through Quake Centre include:

- **QuakeCraft** a secondary school competition funded through the Unlocking Curious Minds Grant and assisted by Ara Institute of Canterbury, where students compete to build the best pop-up sustainable house. All houses are tested on a shake table at the Structural Engineering Laboratory at the University of Canterbury.
- **YouTube** video series to educate industry, communities and secondary school students on earthquake resilience.



Benefit

The biggest benefit of the outreach programmes is the increase in awareness to community. Connecting Quake Centre research to industry leaders and community members at a national level will not only increase education in earthquake resilience, but will create a tighter network of professionals associated with Quake Centre's vision. Training at higher levels will improve disaster risk reduction and expand risk recognition in the event of a natural disaster.

Timeline

Pilot programme for QuakeScape will be held by 31 December through Christchurch CDEM and will be carried out on a national level throughout 2017.

Public seminars are on-going and will be carried out on a national level throughout 2017. Pilot held in Christchurch on 22 August through IPENZ Engenerate Christchurch chapter.

Project outputs will be beneficial to the improved resilience of NZ through increased earthquake resilience education and awareness.

Acknowledgments

Outreach for Quake Centre could not have been achieved without the generous financial support of Quake Centre partners along with QuakeCoRE and assistance from Fabriko Ltd.